

ELOY

ARIZONA



WWW.ELOYAZ.GOV



**THE INTERSECTION OF
VALUE, LOCATION AND OPPORTUNITY**

welcome



On behalf of our Mayor and City Council, I am pleased to introduce you to the City of Eloy, Arizona and the attributes that make our city an outstanding environment for economic investment. We cordially invite you to peruse this material demonstrating why Eloy is the right choice to locate, operate and grow your business.

The City of Eloy is a short 50-minute drive south from the Phoenix Metropolitan area, which has over 3 million people. Strategically located about halfway between Phoenix and Tucson along Interstate 10 (just south of Interstate 8), Eloy has an abundance of vacant, shovel-ready land which is ideally suited for commercial and industrial development



Eloy's prime location has attracted numerous companies over the years, such as the Western Regional Distribution Center for Empire Cat, Schuff Steel, Otto Environmental Systems, and ELRUS Aggregate Systems. The City's economic base is enhanced by the presence of Skydive Arizona at the Eloy Municipal Airport, which attracts thousands of visitors from all over the world for skydiving. Further, we are home to Robson Ranch, an active adult golf community, which includes over 1,000 units (and growing!) of quality housing and resort style amenities.

The City prides itself on having a business-friendly environment that offers predictable and competent development services to our customers. We are fully capable and willing to meet your timetable to be open for business by offering expedited plan review, permitting and inspection services



Thank you in advance for considering the City of Eloy. Please do not hesitate to contact me if you have any questions or require additional information.

Sincerely,

Harvey Krauss
City Manager

ELOY COUNCIL



Mayor Joel G. Belloc



Vice-Mayor Micah Powell



Councilmember Jose Garcia



Councilmember Georges Reuter



Councilmember Andrew Rodriguez



Councilmember Daniel Snyder



Councilmember J.W. Tidwell

freight PROXIMITY



Eloy at a Glance.....	4
Character Areas for Future Growth.....	8
Development Catalysts.....	10
Utilities.....	11
Transportation Access.....	12
Area Map.....	14
Industrial Community.....	16
Agribusiness.....	17
Strategic Partners.....	18
Educational Foundations.....	20
Key Connections.....	26

contents



Produced & Published
in conjunction with

ROX Media, LLC
844.729.9769 | roxmediagroup.net
Elaine Earle, Publisher
520.840.1796 | cfo@roxco.com

Every effort is made to make this publication as accurate as possible. City of Eloy Economic Development and ROX Media LLC, & affiliated companies (collectively, the "Publishers") will assume no responsibility for errors, changes, representations or omissions. No portion of this publication may be reproduced in any way without the express written permission of the Publishers. Users of this publication are encouraged to verify all data and information of material interest to the user. The Publishers make no endorsement, representation or warranty regarding any goods or services advertised in this publication. Unless otherwise noted, all images are courtesy of The City of Eloy Economic Development. Advertisements are provided by the subject companies and the Publishers shall not be responsible or liable for any inaccuracy, omission or infringement of any third party's rights therein, or for personal injury or any other damage or injury whatsoever. Copyright 2019. All rights reserved. 520.426.2074

ELOY^{at a glance}

GET TO KNOW ELOY

Access and Visibility

Eloy is located at the confluence of two major interstates, **I-8** and **I-10** and offers three full-diamond interchanges on Sunland Gin Road, Toltec Road and Sunshine Boulevard. In the future, these existing highway corridors, coupled with the **North-South Freeway** and **Interstate 11**, will add significant international, national, statewide and regional surface connectivity to Eloy's growing industrial sector. The Union Pacific Railroad mainline parallels I-10 the entire width of Eloy and includes several rail spurs with access to the industrial business area.

Size

The city includes approximately **113.7 square miles of land**, much of it available for development.

Weather

Eloy residents and visitors alike enjoy **many days of sunshine** and a **moderate climate**, most of the year. Winter daytime temperatures range from **60** to **80**, while nighttime temperatures generally average in the **40s**. Area humidity is usually in the **15-30 percent**-range year-round.

Taxes

The local property tax rate is currently **\$1.1210/\$100** assessed valuation, and Eloy's sales tax (reviewed by the City Council on an annual basis) is **3 percent**. The transaction privilege tax rate is **3 percent**. For current information on taxes, visit eloyaz.gov/documentcenter/view/732.





Retail

Eloy residents are within easy reach of shopping opportunities, and enjoy a **wide variety of restaurants** and **small shops**, as well as entertainment and recreational facilities.

Aviation Access

Eloy Municipal Airport is a general aviation facility conveniently located 4 miles north of downtown. It offers a lighted **3,900-feet by 75-feet** runway and has a **Fixed Base Operator (FBO)** that provides 100LL fuel and Jet-A Fuel. Its mission is to encourage and advance the safe and orderly development of aviation in Eloy.

Medical Care

Sun Life Family Health Center provides residents with a full spectrum of typical health care services, including a pharmacy. More complex medical needs can be addressed within minutes at Banner Casa Grande Medical Center. The community also has **32 additional physicians** (specialists) available, along with other medical professionals, through the Associated and Allied Health Professions in Casa Grande.

Workforce

Eloy employers draw upon a base population of nearly **117,000** residents living within 30 minutes of the city. Skilled and semiskilled workers are available to provide a stable, hard-working labor force for area employers, while workforce development programs are abundantly available through such institutions as Central Arizona College, Central Arizona Valley Institute of Technology, ARIZONA@WORK and other programs.



ELOY at a glance

For more information visit:
www.elayaz.gov



17,412 Total Population

**includes approximately 6,800 inmates within area private prisons*



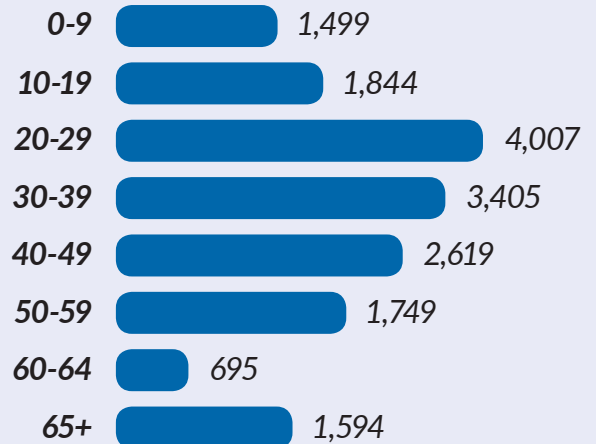
49%
Male

**adjusted for prison population*

51%
Female



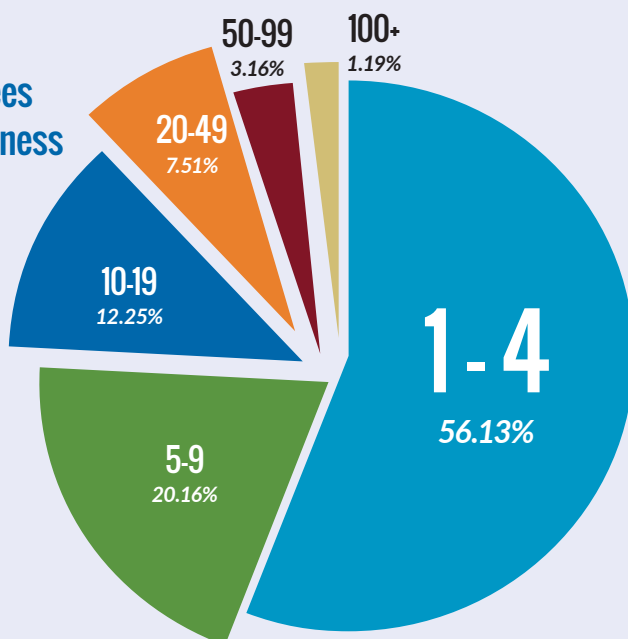
Age Distribution



Median Age

34.1

Employees Per Business



3,798
Labor Force



14.54%
Office and
Administrative support

POPULATION BY RADIUS

20 miles - 76,490
25 miles - 99,244
30 miles - 117,810
40 miles - 237,771
50 miles - 1,522,366

BLUE-COLLAR LABOR FORCE WITH
ROOM FOR MANAGERS



HOUSING



Owners

65.61%

Renters

34.39%

Average Commute

23 Minutes

FREIGHT DRIVE MILES / TIME*

*ungoverned speed, rounded to 10 minute increments

CITY	DISTANCE	DRIVE TIME
Tucson AZ	51 miles	50m
Phoenix AZ.....	54 miles	60m
Nogales MX	119 miles	2h
Yuma AZ	187 miles	2h, 50m
Puerto Penasco MX ...	190 miles	3h, 30m
Hermosillo MX	291 miles	5h 20m
San Diego CA	357 miles	5h 10m
El Paso TX	368 miles	5h 10m
Los Angeles CA	434 miles	6h 30m
San Francisco CA	815 miles	12h
Dallas TX.....	1,003 miles	14h 20m
Houston TX	1,114 miles.....	16h 10m
New Orleans LA	1,460 miles	21h 20m
Seattle WA	1,483 miles	22h 40m
Calgary AL	1,606 miles	24h
Vancouver BC	1,619 miles.....	25h
Minneapolis MN	1,639 miles	26h
Detroit MI.....	1,979 miles.....	30h
Orlando FL	2,076 miles.....	30h

A LOOK AT ARIZONA

Low taxes and small state government means Arizona offers one of the lowest costs of doing business in the U.S., according to the Arizona Commerce Authority. The state also boasts a robust, skilled workforce and ease of transportation to local and international markets.

18.5%

less than national average per capita income going to taxes

2ND LOWEST IN NATION

Government employees per 100 residents

(Source, 2018 ALEC-Laffer State Economic Competitiveness Index)

6TH MOST FAVORABLE IN NATION

Property Taxes

15TH MOST FAVORABLE IN NATION

Unemployment Insurance Tax

(Source, 2018 Tax Foundation State Business Tax Climate Index)

13TH LOWEST IN NATION

Average Workers' Compensation Costs (per \$100 of payroll) (Source, 2018 ALEC-Laffer State Economic Competitiveness Index)

+2 MILLION

Number of Workers Living in Greater Phoenix Area Alone

(Approximately 54 Miles from Eloy)

65 MILLION

Number of people a one-day drive is capable of reaching

+100 CITIES +4 COUNTRIES

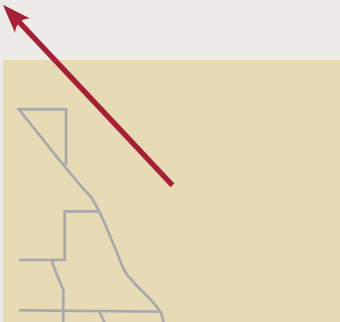
(Including Mexico, Canada, England and Germany) Served by Phoenix Sky Harbor International Airport

800 TONS

Daily Amount of Cargo Handled at Phoenix Sky Harbor International Airport

character areas FOR FUTURE GROWTH

Robson Ranch was initially developed in 2006, and currently provides **over 1,000 up-scale homes** with quality-of-life amenities requested by active adults. Single-family housing and condominium living are complemented by facilities to accommodate a variety of sports activities including 18-hole golf, arts and crafts sessions, hiking and biking, an aquatics center, Pickleball and tennis as well as access to retail and commercial services. New phases of development are currently under construction.



Lucid Motors plans to break ground on a manufacturing facility in Casa Grande in 2019. The electric-car startup will compete with Tesla for the luxury-car electric market. **Lucid has partnered with Central Arizona College, creating a regional workforce training program.**

Employment Corridor

Eloy's business corridor is home to many of Eloy's retail and industrial employers. Frontier Street is north of and parallel to the Union Pacific Railroad as well as Interstate 10 to the south. A large inventory of vacant, industrially-zoned and utility-served property is available for development.

ARIZONA CITY

Although the Eloy community was settled in the early 1900s, Eloy incorporated itself as a city in 1949. Historically an agricultural community, the city is strategically located at the crossroads of Interstates 8 and 10, making it a prime location for an industrial-based economy.



Eloy Municipal Airport is located approximately 3 miles northwest of downtown and encompasses approximately 100 acres. With two active runways, the airport is available to general aviation from dawn to dusk. Hangars and T-shades are located on airport properties, and aviation fuel is available for sale. The Eloy Municipal Airport is home to Skydive Arizona™, a world-class facility attracting skydivers from around the world. In October 2019, Skydive Arizona hosted the FAI Parachuting World Cup. The Bent Prop Café is located onsite for food services, as well. The city owns approximately 280 acres adjacent to the airport for a future business/ industrial park.

Three miles from I-10, **Nikola Motor Company**, a hydrogen-electric vehicle manufacturer, is **expected to make a \$1 Billion commitment to the region**. Located just outside of the Eloy city limits in the Inland Port Arizona industrial park, the company will be producing clean energy, hydrogen-powered semi-trucks.

Downtown Eloy is the heart of the city and home to City Hall, the U.S. Post Office, and the police and fire stations. Wrapping around the city's governance complex and Main Street Park, the downtown area offers a host of investment opportunities for new construction and building renovation serving residential, office and retail uses. The new City Hall opened in the spring of 2019. The old location is currently under renovation and when completed, will more than double the available space for the police department. Downtown facade renovations are also underway in 2019. The area is also home to a number of community services, including Sun Life Family Health Center, Pinal Hispanic Council, Community Action Human Resources Agency and Eloy Veterans Center, among others.

www.elayaz.gov

DEVELOPMENT catalysts

The city can offer an array of tools to induce desired development, including but not limited to, the sectors of aviation and aerospace, advanced manufacturing, global logistics and value-added agribusiness.

These include:

- **Significant industrial-zoned land inventory – over 5,400 acres**
- **Predictable Entitlements Process** with its recently-revised zoning ordinance and updated general plan
- **Expedited review and permitting processes**
- **Foreign Trade Zone No. 174**
(Over 250 acres available)

A foreign-trade zone is a designated location in the United States where companies can use special procedures that help encourage U.S. activity and value added – in competition with foreign alternatives – by allowing delayed or reduced duty payments on foreign merchandise, as well as other savings. Arizona offers up to a 75% reduction in real and personal property taxes for activated FTZs.



- **Low impact fees**
- **Incentives and potential deal-closing funding/improvements**
- **Knowledgeable and cooperative staff**
- **Arizona Opportunity Zones**

Arizona's Opportunity Zone nominations were submitted on March 21, 2018 and approved by the U.S. Treasury Department on April 9, 2018, making Arizona one of the first states in the nation to have its zones officially designated.

The federal Opportunity Zones program allows each state's governor to nominate up to 25 percent of the qualifying low-income Census tracts as Opportunity Zones. It was created under a provision of the Tax Cuts and Jobs Act, which was signed into law December 2017. Investors who reinvest capital gains monies in Opportunity Zone funds will receive reductions on capital gains taxes relative to the years of their investment.



www.azcommerce.com/arizona-opportunity-zones/



UTILITIES

Electrical Service

APS (Arizona Public Service) is the largest and longest-serving electric utility in Arizona and principal subsidiary of publicly-traded S&P 500 member Pinnacle West Capital Corporation. Like companies in Arizona's largest metropolitan areas, most industry in Eloy is served by this reliable and innovative utility. Locally-owned and -operated Electrical Districts (ED) #4 provide electrical energy to Eloy's residents as well as additional businesses. A majority of their customers are agribusiness operations and/or residential consumers. A variety of energy supplies are available, and the districts are responsive to new industrial customers.

Water Supply and Service

The City of Eloy provides potable water to the majority of the city's incorporated area. Rates are reasonable, and since the City of Eloy is a designated provider for the purposes of the State's Assured and Adequate Water Supplies, requirements for all new developments in the Pinal Active Management Area, we are a one-stop operation for new and relocating industries.

Wastewater Collection and Treatment

Eloy's wastewater collection and treatment system extends throughout the majority of the City's developed areas. Its wastewater treatment plant currently has a capacity of two mgd with existing flows at under one mgd. Our WWTP's discharge supplies are treated to Class B standards.

Natural Gas Service

Southwest Gas Corporation serves the City of Eloy's customers with adequate, reasonably priced natural gas through a distribution system that matches the needs of residential, commercial, retail and industrial consumers.

Telecommunications Service

The City of Eloy's primary telecommunications utility provider is CenturyLink, which accommodates both voice and data services. AireBeam Broadband will soon go live with a large, comprehensive 'dark' fiber network that will cover much of the developed city, including many of the area's existing employers.



TRANSPORTATION

access

Since 1902 when the Southern Pacific Railroad built a switch west of Picacho called “Eloy,” the community has placed transportation as a priority. The location of the Union Pacific Railroad’s main line coupled with the I-10/I-8 junction make Eloy extremely attractive for companies requiring efficient transportation of goods.

Existing Vehicular/Truck Routes

Interstate (I-10)

Interstate 10 is the only “all-weather” interstate corridor that connects Los Angeles and the Pacific Coast Highway to Jacksonville (FLA) and the I-95 Corridor. I-10 is the busiest Arizona freeway, serving a daily average of 175,000 vehicles traveling between Phoenix and Tucson. Eloy contains 11.3 miles of freeway exposure, much of which is identified as commercial, retail and industrial in the city’s general plan. ADOT is currently widening and improving I-10 within Eloy’s Planning Area as part of its five-year capital plan for the area.

Interstate 8 (I-8)

Interstate 8 connects central Arizona directly with the markets of Southern California, San Diego and Baja Mexico. The eastern terminus of I-8 is adjacent to the business corridor and is easily accessible for Eloy industries and businesses, and provides a virtually uninterrupted corridor into the heart of Southern California.

Future Vehicular/Truck Routes

North-South Freeway

Pinal County voters recently approved an increase in the county’s sales tax for the purpose of constructing regional roadway and transit improvements. A major project will connect the eastern portion of the Phoenix Metropolitan Area and Williams Gateway Airport with I-10 and Eloy.

Interstate 11 (I-11)

Congressional approval has been given to initiate a Tier 1 Environmental Impact Statement as the first step to implement the country’s newest interstate freeway, I-11 which will connect the economies of Nevada and Arizona and could ultimately link Mexico and Canada through the western United States.





Union Pacific Railroad

UPRR is a major Class A rail transportation provider. Its double-tracked mainline traverses the entire width of Eloy, and is parallel to I-10 and the business corridor. The UPRR mainline through Eloy connects with the Canadian border to the north, Mexico to the south, the California coast to the west and as far east as Chicago, Memphis and New Orleans. Several of Eloy's current industries already utilize rail spurs on this line, with backing and encouragement of the state and region. UPRR is committed to the development of a major rail classification yard southeast of the city.

Aviation

Eloy Municipal Airport

The city's municipal airport is located approximately 4 miles northwest of the downtown area, and is the home to a world-class skydive operation and ancillary businesses. Eloy's abundant clear skies, temperate weather and generally light winds provide unmatched opportunities for aviation-related enthusiasts and industries.

Pinal Airpark

Located just south of Eloy and adjacent to the proposed UPRR classification yard, the Pinal Airpark is owned and operated by Pinal County. A repair, maintenance and storage facility onsite is operated by Marana Aerospace Solutions (formerly Evergreen Air Center). The county has upgraded and improved the primary runway that currently accommodates commercial aircraft, including 747s.

Phoenix Sky Harbor International Airport

Arizona's largest airport offers direct connections to international and national destinations, including more than 100 cities and four countries (Mexico, Canada, England and Germany). Phoenix Sky Harbor International Airport is the eleventh-busiest large airport in the country, and fewer than 50 air miles to Eloy.

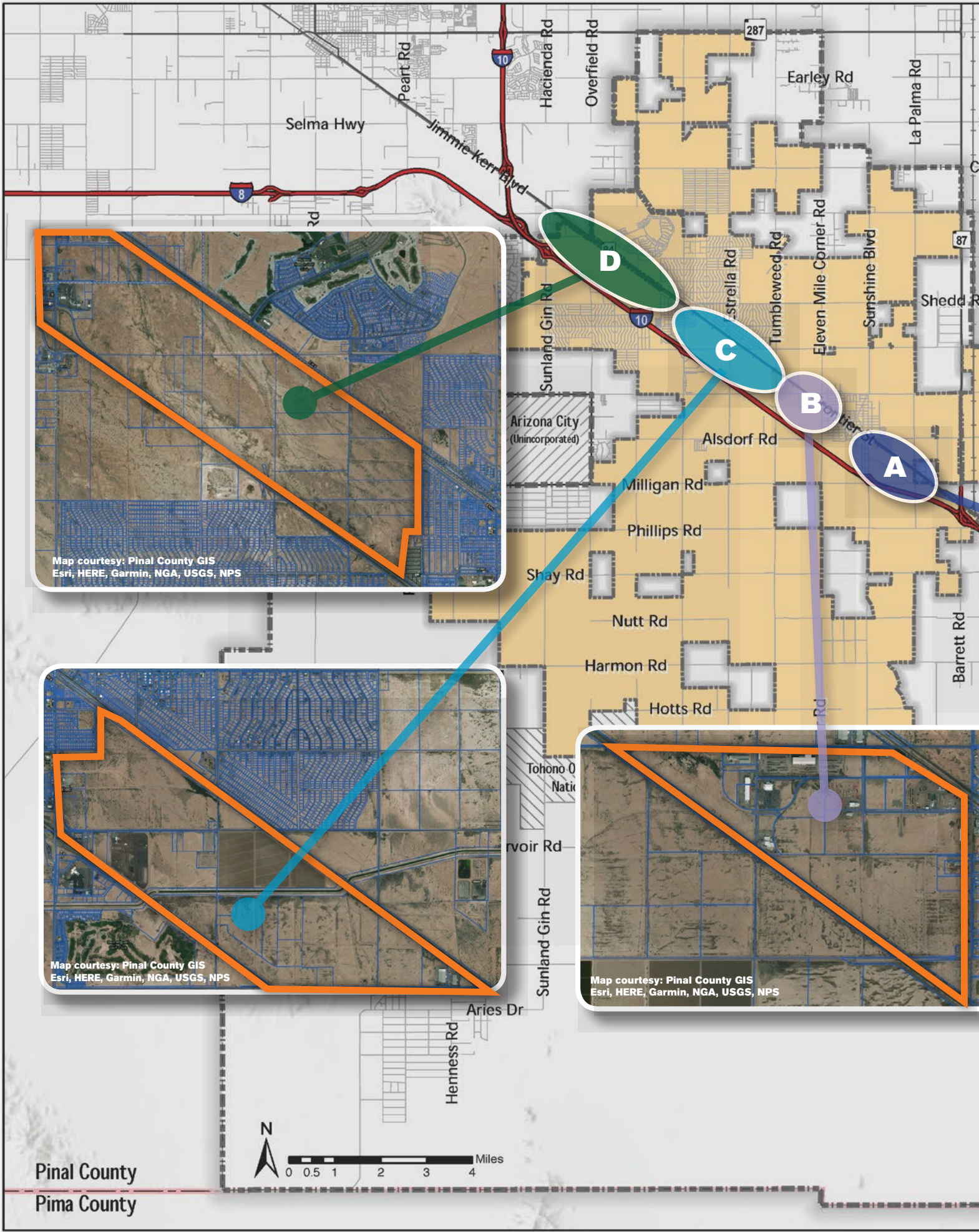
Tucson International Airport

Located approximately 65 air miles south of Eloy, Tucson International Airport is a general aviation airport facility that offers direct connections to international and national destinations and serves southern Arizona. It is Arizona's second-busiest airport and can easily be accessed from Eloy via I-10.

"Eloy's excellent location on I-10, near I-8 and on the main southern US rail line for Union Pacific railroad, provides the City with incredible opportunities to not only compete for manufacturing, warehousing and transportation/logistics projects at a regional level but at the statewide and national level as well. Eloy has several hundred acres of rail served properties all accessible by the adjacent robust interstate system and 2 international airports in the metro Phoenix area within 40 miles of the city. I believe Eloy is on the verge of great economic growth."

**Tim Kanavel, Pinal County
Economic Development
Program Manager**





AREA MAP



Reference

City Limits

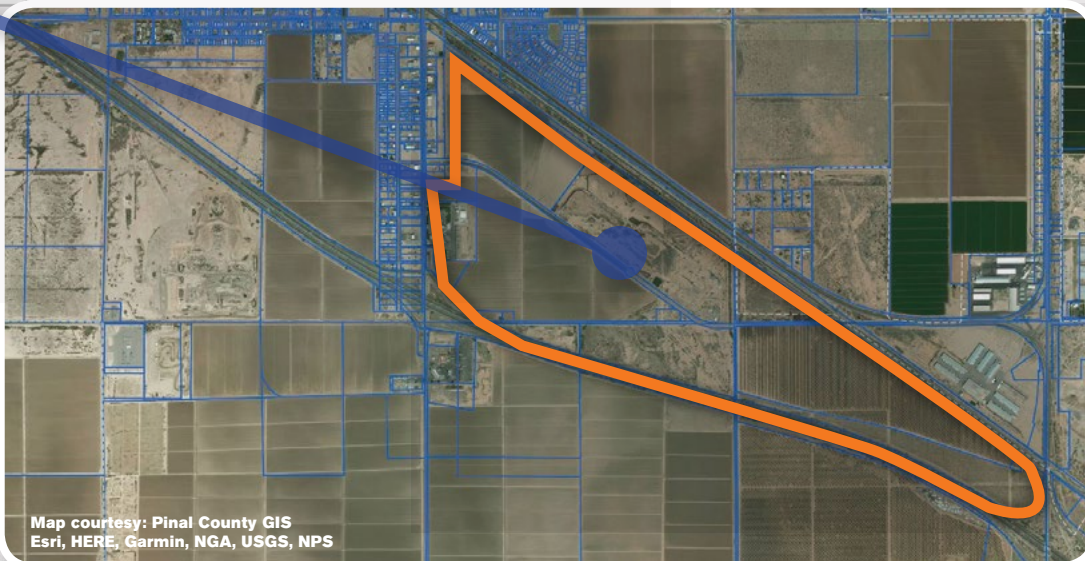
Planning Area Boundary

Interstate

State Highway

Local Road

Railroad



Map courtesy: Pinal County GIS
Esri, HERE, Garmin, NGA, USGS, NPS

AREA	ACRES AVAIL.	WATER	POWER	SEWER	FEMA
A	300	YES	YES	YES	OK
B	300	YES	YES	YES	OK
C	500	MAYBE	MAYBE	MAYBE	OK
D	1100	MAYBE	MAYBE	NO	OK

Disclaimer: This map is furnished for reference purposes only and is not suitable for legal, financial, engineering, or surveying purposes or commitments. The City of Eloy assumes no responsibility for errors, omissions, or inaccuracies presented, and shall have neither liability nor responsibility for any direct or indirect loss or damage in connection with, or arising from, the information on this map. Any conclusions derived from this map are the responsibility of the user.

ELOY'S

industrial community

A number of thriving manufacturing companies are headquartered in Eloy. Their reasons for selecting the community as their base for operations include proximity to transportation, including rail; affordable land and construction; a steady supply of blue-collar workforce members and support from the city on development.

Otto Industries is a subsidiary of Otto Industries of North America. The company began making containers for the waste industry in 1952 and soon branched out into manufacturing recycled plastics into a wide variety of containers for industrial, commercial and residential uses.

Schuff Steel is one of the country's largest, most-trusted and experienced steel fabricators and erectors in the USA.

Republic Plastics produces a range of custom and private-label foam food containers, plates, bowls and more for customers throughout the United States.

Hasa Chemicals (Hasa Inc.) is a privately held company in Eloy. Categorized under Alkalies and Chlorine Manufacturers, current estimates show this company has an annual revenue of \$5 to 10 million and employs a staff of approximately 34.

San Juan Pools has been building fiberglass pools to consumer specifications for 60 years, and is pleased to be a part of the Eloy industrial community.





Eloy's growth industry **AGRIBUSINESS**

Eloy emerged from the desert in 1878-1880 as the Southern Pacific Railroad came north from Tucson on its way to Phoenix. Eloy's Native American neighbors had already demonstrated their ability to raise crops, and with the advent of heavy duty, deep well pumps in the early 1900s, the area's agricultural industries emerged with cotton and grain crops. Pecans also became feasible and economically viable as well. At present, there are approximately **40,000 acres** under cultivation in Eloy's planning area. Most of the crops are in cotton, grains, vegetables, and a small amount of guayule. Agribusiness here provides employment for some 1,000 residents and accounts for approximately 25% of the local economy.

Monsanto-Delta Pine is a global agriculture company, developing products and tools to help farmers around the world to grow crops while using energy, water and land more efficiently. Monsanto is a Fortune 500 company and chose Eloy as a site for cotton seed ginning and delinting processes.

Bridgestone Americas Inc. (The Bridgestone Group) owns and operates the Agro Operations Guayule Research Farm in Eloy. The research farm supplies guayule biomass for rubber production at the company's BioRubber Process Research Center in Mesa. Bridgestone Corporation is the world's largest tire and rubber company. Its products are sold in over 150 nations and territories around the world.



strategic PARTNERS

The City of Eloy works closely with a number of strategic partners and organizations committed to supporting and fostering the growth of new and existing businesses and those relocating to the city. Strategic alliances, such as those between higher education and employers, provide everything from workforce development to library resources for the community.

Arizona Commerce Authority (ACA) is the state's economic development organization, whose mission is to recruit, grow, create – recruit out-of-state companies to expand their operations in Arizona; work with existing companies to grow their business in Arizona and beyond; and partner with entrepreneurs and companies large and small to create new jobs and businesses in targeted industries. azcommerce.com

ARIZONA@WORK is a statewide response to the Workforce Innovation & Opportunity Act of 2014. This program is a private-public partnership of private business, community and labor organizations and local and state government agencies with a mission to provide innovative workforce solutions to employers and job seekers. Their workforce development network helps employers of all sizes and types recruit, develop and retain the best employees for their needs. Arizona at Work works closely with the City of Eloy through its office in nearby Casa Grande. arizonaatwork.com/pinal

Sun Corridor Metropolitan Planning Organization provides transportation planning services to the communities of Casa Grande, Coolidge, Eloy and rural portions of Pinal County. It is a strategically-located corridor in which economic growth is expected to thrive. scmpo.org



City Hall Ribbon-cutting 2019

L-R: Councilmembers Jose Garcia, Daniel Snyder, City Manager Harvey Krauss, Vice-Mayor Micah Powell, Mayor Joel G. Belloc, Councilmembers Andrew Rodriguez, J.W. Tidwell, Georges Reuter



Eloy is a city poised for success well into the upcoming decades. Its location in the heart of the Arizona Advanced Technologies Corridor, a strategic alliance between Central Arizona College, Pima Community College and Maricopa Community Colleges, assures it will produce talent with the skills required by advanced manufacturing employers. And the newly created Opportunity Zones on both sides of the I-10 will incentivize further development of the area."

*Sandra Watson, CEO & President,
Arizona Commerce Authority*

Pinal Alliance for Economic Growth brings together local governments and their economic development specialists in order to retain and expand existing businesses and attract new employers to western Pinal County. pinalalliance.org

Pinal County Economic Development Department Pinal County is located in the very heart of the Sun Corridor. The county's economic development department works closely with Eloy and other local municipalities in order to expand and support existing and new businesses in this diverse economy. This includes traditional economies of mining and agriculture as well as emerging economies of aerospace, biomedical, renewable/green technologies, high-tech manufacturing and recreation/tourism, etc. pinalcountyz.gov

Arizona Public Service (APS) Corporation in conjunction with the Arizona Commerce Authority provides a website where developers and real estate agents can share relevant information on available properties. arizona-prospect.com

Central Arizona College has embarked on a path of partnership with local industries and businesses – in addition to core curricula classes in education, business and nursing – for students to earn stackable certificates which can lead to apprenticeships and employment centralaz.edu

Eloy Chamber of Commerce promotes co-operation among businesses, trade, professional associations and governmental agencies and encourages growth of new and existing businesses and industries to enhance and diversify the local economy. eloychamber.com



EDUCATIONAL foundations

Quality education offerings are critical for a skilled and employable workforce, and Eloy proudly offers residents a variety of accredited educational opportunities from post-secondary education to preK-12.

Post-Secondary Education

Central Arizona College (CAC) serves as Pinal County's two-year community college. The college, located northwest of Eloy, has agreements with all three of Arizona's Universities (i.e. Arizona State University (main campus in Tempe), Northern Arizona University (main campus in Flagstaff) and University of Arizona (main campus in Tucson), thus able to offer access to four-year degree programs in a "2+2" degree arrangement (i.e. course work can take place on the CAC Campuses in Pinal County and students can earn a four-year degree in a number of subject areas). The college has recently transitioned its focus from a traditional academic model to curricula that is responsive to the workforce needs of Pinal County's industries – 70 percent of which are located in and around Eloy in western Pinal County. For example, the College has formed an innovative partnership with SUNDT Construction: the company participates in classroom instruction and upon graduation, many of those students are immediately employed by SUNDT. Other local industries such as John Deere, Lucid Motors, etc. are the beneficiaries of similar modifications in the curricula with graduating students enjoying high rates of employability.

POST-SECONDARY	DISTANCE	DRIVE TIME
Central Arizona College	24 miles	27 min
University of Arizona	52 miles	51 min
Arizona State University	57 miles	60 min





Secondary Education

Santa Cruz Valley Union High School District is a one-high-school district with an enrollment of 550 students and 50 teachers, administrators and staff members.

Located within the campus of SCVUHS, a wealth of information can be found in the **Eloy Santa Cruz Library**. The Library's automated catalog system allows both simple and complex information searches from any terminal in the system or via the Internet. Customers can choose from audio CDs, books, downloadable audio books, DVDs, eBooks, magazines, new releases, special collections, streaming video and more. This resource is a joint venture between the school district, the City of Eloy and the Pinal County Library District.

The **Central Arizona Valley Institute of Technology** (CAVIT) is a public school district working in partnership with 13 area high schools, including the Santa Cruz Valley Union High School. Students in these area high schools can begin preparing for high-wage, high-demand occupations through CAVIT, such as cosmetology, emergency medical technician careers, fire science, law enforcement, massage therapy and medical, nursing and veterinary assistant careers while still enrolled in high school.

CAC's team of dedicated faculty and staff is committed to laying the groundwork for new and innovative methods of distinguishing CAC as a leading community college, providing a gateway to higher education and rewarding careers. Central Arizona College serves as a True Learning community by empowering students and staff to succeed."

Dr. Jackie Elliott,
President/CEO,
Central Arizona College

Primary Education

Primary public education is accommodated by the Eloy Elementary School District, Picacho Elementary School District, Toltec Elementary School District within the city.

Eloy Elementary is a multicultural district serving approximately 1,000 students. The district has three neighborhood elementary schools in the downtown area. These schools provide instruction in a core curriculum, including reading, language arts, mathematics, science and social studies. The majority of the certified staff have at least 10 years of experience in the classroom.

Toltec Elementary School District is a small, one-school district that strives to provide its multicultural student body with the best elementary school instruction possible.

Picacho Elementary School District is located on the southwestern edge of Eloy, near Picacho Peak. It offers a small-school atmosphere with big school results. The entire staff, from superintendent to bus driver, is committed to the idea that all children can and should succeed in school and life.





Central Arizona College

*Teaching Reaching
Understanding Empowering
Learning.*



For more than 45 years, Central Arizona College has been serving and educating the diverse communities of Pinal County. With five campuses and three centers located strategically throughout the county, CAC provides accessible, educational, economic, cultural, and personal growth opportunities for those of all ages.

www.centralaz.edu

Education at the Speed of Industry

CAC continues to work collaboratively with Pinal County/Arizona businesses to develop certificates and degrees that place students on career paths for lifelong success.



SUNDT

In 2016, Sundt Construction and CAC recognized a larger gap in available skilled workers, leading them to conclude that developing an all-encompassing partnership was warranted. This led to the development of:

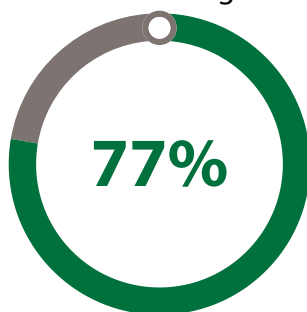
- Five customized and tailored academic pathways
- National Center for Construction Education and Research (NCCER) core certification
- American Welding Safety requirements
- Embed OSHA 30
- "Soft Skills" training
- Level 1 and 2 certification in the trade as well as a CAC credential

Results thus far have been an increased enrollment in the program from ten at the beginning of 2017 to more than 100. CAC continues to develop partnerships with businesses like **Resolution Copper, Abbott Nutrition, Wal-Mart Distribution, and Lucid Motors** just to name a few.

Industry Recognized Credentials



CAC Students Residing in Pinal Co.



2016-17 Region One
Athletic Championships

5 Men's Cross Country
Women's Cross Country
Softball
Men's Track & Field
Women's Track & Field
45 Total Championships



LOCAL INVESTMENT. LASTING IMPACT.

Every new dollar generated through economic growth contributes to the long-term vitality of our communities. That's why we work with businesses and community leaders to help bring new jobs and investments to our state. We are honored to partner with the City of Eloy to create a stronger future for Arizona.



**Pinal County's
2017 growth rate
tops in state**

By KYLEY SCHULTZ

"Both Maricopa County and Pinal County are doing exceptionally well in growth because they are the economic bases for the state."

Economist Elliott Pollack said.



PINAL COUNTY

WIDE OPEN OPPORTUNITY

Find out why companies and people are moving to Pinal County

AFFORDABLE HOUSING

- The median list price per square foot in Pinal County is \$114
Significantly lower than the Phoenix Metro average of \$154.

BUSINESS FRIENDLY

- Expedited permitting
- Business assistance programs for those who qualify
- Very aggressive economic development efforts
- Low tax rates

CONVENIENT TRANSPORTATION HUBS

- Interstates 10 and 8 converge in Pinal County
- Easy access to West and East Coast
- Union Pacific rail line goes through Pinal County
- Two international airports in Phoenix and Tucson

PLENTY TO DO

- Five state parks and hundreds of miles of trails
We're a get-off-the-couch type of county!

For more information visit pinalcountyyaz.gov or email timothy.kanavel@pinalcountyyaz.gov

Central Arizona Intersection of Progress

Choice location providing all-access
environment essential to business growth

- Well-established multimodal transportation in road, rail and air
- Direct routes to Ports of Los Angeles and Long Beach and located along the Canamex corridor I-10, I-8 and (future I-11)
- Abundant affordable land primed for shovel-ready sites with modern infrastructure
- Enterprise and trade zones
- Plentiful resources and raw materials for specialized manufacturing, ag industries, aviation & aerospace technology
- Strong trade relationship with Mexico
- Four Arizona universities graduated nearly 46,000 students in 2016
- Three major community college systems working together to prepare the workforce for advanced technology jobs



350 days of sunshine a year



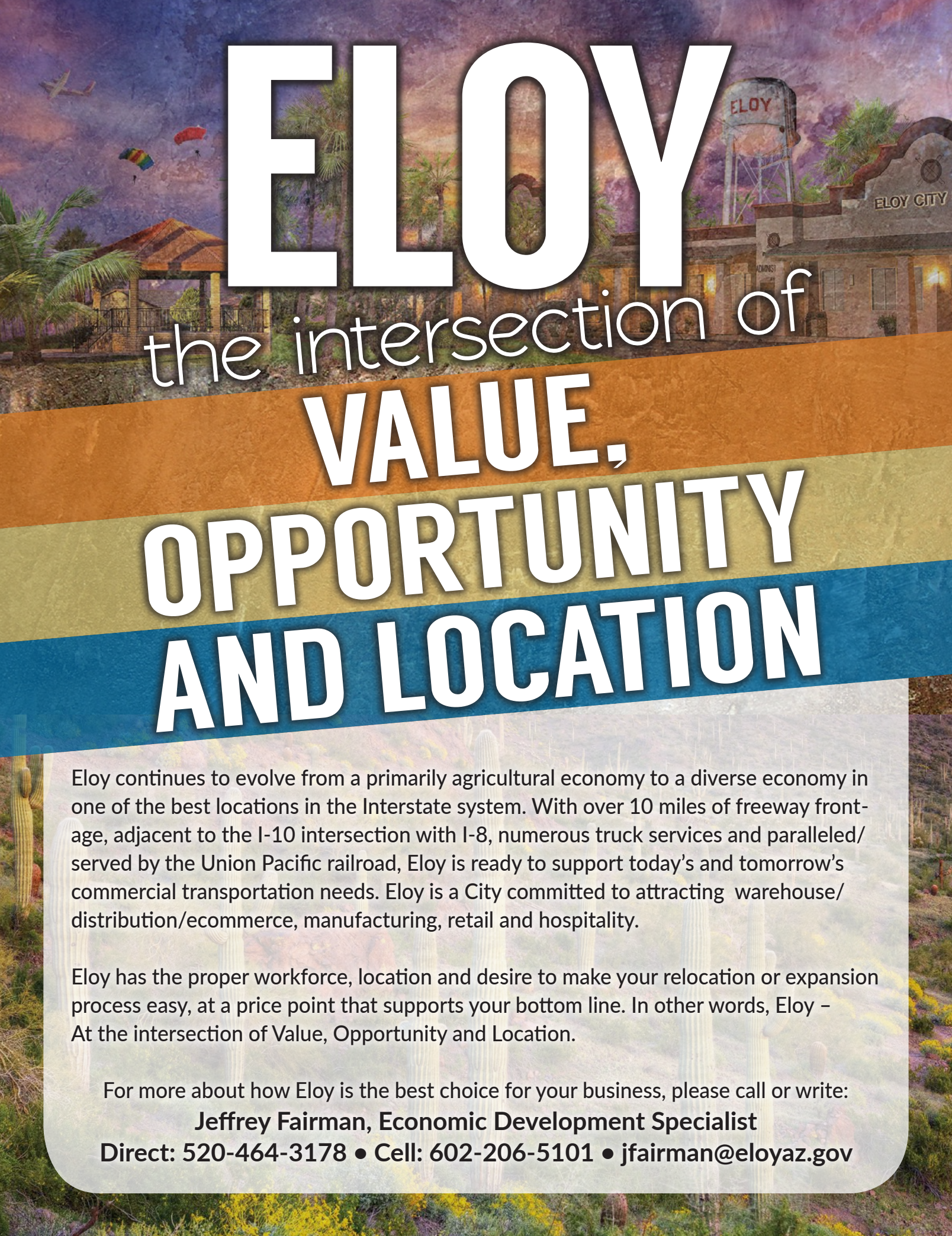
1 hour from 2 international airports



2 railroad lines connecting to inland port



6 regional airports for corporate & cargo transport



ELOY

the intersection of

VALUE, OPPORTUNITY AND LOCATION

Eloy continues to evolve from a primarily agricultural economy to a diverse economy in one of the best locations in the Interstate system. With over 10 miles of freeway frontage, adjacent to the I-10 intersection with I-8, numerous truck services and paralleled/served by the Union Pacific railroad, Eloy is ready to support today's and tomorrow's commercial transportation needs. Eloy is a City committed to attracting warehouse/distribution/e-commerce, manufacturing, retail and hospitality.

Eloy has the proper workforce, location and desire to make your relocation or expansion process easy, at a price point that supports your bottom line. In other words, Eloy – At the intersection of Value, Opportunity and Location.

For more about how Eloy is the best choice for your business, please call or write:

Jeffrey Fairman, Economic Development Specialist

Direct: 520-464-3178 • Cell: 602-206-5101 • jfairman@eloyaz.gov



KEY connections

The City of Eloy and our community partners are proud to serve the businesses, residents and visitors in our community. We welcome your questions and feedback.

Key City Staff Members

Harvey Krauss, City Manager

520.466.9201 • jkrauss@eloyaz.gov

Jon Vlaming, Community Development Director

520.466.2578 • jvlaming@eloyaz.gov

Jeff Fairman, Economic Development Specialist

520.464.3178 • jfairman@eloyaz.gov

Keith Brown, Public Works Director

520.466.3082 • kbrown@eloyaz.gov

Utilities

Water & Sewer: City of Eloy

520.466.3082 • eloyaz.gov

Natural Gas: Southwest Gas Corporation

520.794.6444 • swgas.com

Power: Electrical District 4

520.466.7336 • ed4.biz

Power: Arizona Public Service Company

800.240.2014 • aps.com

Telecommunications: CenturyLink

800.244.1111 • centurylink.com

Telecommunications: AireBeam

520.233.7400 • airebeam.com

Business Resources and Partnerships

Arizona at Work

520.866.3600 • arizonaatwork.com/pinal

Arizona Commerce Authority

602.845.1200 • azcommerce.com

Eloy Chamber of Commerce

520.466.3411 • eloychamber.com

Pinal Alliance for Economic Growth

520.836.6868 • pinalalliance.org

Pinal County Economic Development

888.431.1311 • pinalcountyaz.gov

Sun Corridor Metropolitan Planning Organization

520.705.5143 • scmpo.org

For additional information
and contact information, visit

eloyaz.gov

“
**WHERE POTENTIAL
BECOMES PROFIT**
”



WWW.ELOYAZ.GOV